



IMPACT ASSESSMENT REPORT

**CSR CONTRIBUTIONS MADE BY TECH MAHINDRA LTD TO MAHINDRA
EDUCATIONAL INSTITUTIONS**

CA SURYA KIRAN M

CONTENTS

- Report
- Executive Summary
- Detailed Report
- Appendix

Report

To,
The Board of Directors,
Mahindra Educational Institutions,
Hyderabad.

Subject: Submission of CSR Impact Assessment Report for FY 2024–25

Dear Sir/Madam,

I am pleased to submit herewith the Impact Assessment Report relating to the CSR contributions made by Tech Mahindra Limited to Mahindra Educational Institutions (MEI) for the financial year 2024-25.

This assignment was undertaken in accordance with the mandate received from your good office, with the objective of evaluating both the tangible and intangible outcomes resulting from the CSR funding extended towards higher education infrastructure and allied initiatives implemented through MEI/Mahindra University.

Scope of work

The assessment was conducted with the following key objectives to:

- Verify the deployment and end-use of CSR funds contributed by Tech Mahindra to MEI.
- Evaluate the overall outcomes and effectiveness of CSR initiatives during FY 2024-25
- Assess alignment of impact with the CSR vision and objectives of Tech Mahindra.
- Suggest high-level areas for improvement, if any, for ongoing and future initiatives.

Key limitations

- The report is based on documentation and information made available by the management of MEI, and no independent financial or statutory audit has been conducted as part of this assignment.
- Time constraints limited our ability to conduct direct interactions with faculty members and students, hence beneficiary-level insights were drawn primarily from secondary interactions and internal stakeholders.
- The findings are intended to provide a qualitative and directional view, and do not represent an audit opinion or assurance engagement under professional auditing standards.

I am herewith enclosing the executive summary and detailed report for your perusal. I trust that this report will serve as a useful input in evaluating the effectiveness of your CSR contributions and support informed decision-making for future initiatives.

Thank you for the opportunity to be associated with this important initiative.

Yours faithfully,

For M. Surya Kiran & Co.,

Chartered Accountants



M Surya Kiran

Chartered Accountant

Membership No.: 221885

Date: April 16, 2025

Place: Hyderabad

EXECUTIVE SUMMARY

Background:

Tech Mahindra Limited (TechM) is a prominent global Information, Communications, and Technology (ICT) company based in India, renowned for providing innovative solutions and services to a diverse range of international clients, including Fortune 500 companies. Mahindra Educational Institutions (MEI), established by TechM as a not-for-profit subsidiary, is dedicated to fostering education, research, innovation, and technological development. Under MEI, Mahindra University (MU) was founded to offer diverse educational programs across various academic fields, reflecting a strong interdisciplinary approach and rapidly expanding infrastructure, significantly supported by TechM's corporate social responsibility (CSR) initiatives.

Summary of CSR Objectives:

Tech Mahindra's CSR vision, encapsulated as "Empowerment through Education," highlights several strategic objectives:

- Demonstrate commitment to societal welfare through ethical business practices, responsible governance, and transparency.
- Actively support sustainable development initiatives aligned with national and regional development agendas.
- Establish and uphold exceptional standards and replicable models for delivering high-quality educational and social services.
- Foster a culture of empathy, equity, and social responsibility among employees, encouraging active participation in community development.



The specific areas of focus for TechM's CSR activities encompass educational enhancement, improving employability through skill development, advancing technical education, and promoting inclusive opportunities for underserved and marginalized communities.

Contributions received:

During the year, MEL received ₹ 74.93 Crores from Tech Mahindra Limited.

Key tangible impacts:

- **Infrastructure enhancement:** A significant investment totaling ₹ 74.93 Crores has been directed towards developing advanced facilities at Mahindra University. These include construction and enhancement of hostels, refurbishment works for classrooms, BT labs, computer labs, Guesthouse, and ECSE academic Infrastructure like labs and office spaces etc.
- **Improved access to quality education:** A pronounced positive impact has been observed in terms of accessibility and quality of higher and technical education, benefiting numerous students from diverse socioeconomic backgrounds.
- **Scholarships and financial aid:** Over 450+ meritorious students, including a specific focus on girl students and students from the Northeastern states, have received scholarships, considerably broadening their educational opportunities.
- **Increased placement opportunities:** Enhanced infrastructure and educational quality have led to increased placements of MU students in renowned national and international corporations, underscoring the effectiveness of TechM's CSR educational initiatives.



- **Innovation and research:** Significant growth in research output and innovation year, highlighting MU's rising prominence as a research-focused educational institution.

Key intangible impacts:

- **Elevated social awareness:** TechM's CSR initiatives have fostered greater community awareness and responsiveness towards sustainable development, environmental stewardship, and the importance of educational excellence.
- **Enhanced brand equity:** The initiatives have effectively strengthened the brand reputation of Mahindra, positioning it beyond corporate identity into a leading educational and innovative institution, positively influencing societal perceptions.
- **Institutional reputation:** Mahindra University's enhanced academic quality and innovation have significantly contributed to the improved public image of Tech Mahindra, reinforcing its identity as a socially responsible corporate entity.

Highlighted key findings and recommendations:

- **Positive stakeholder reception:** CSR projects undertaken by Tech Mahindra are highly impactful and have been met with strong positive feedback from various stakeholders, including students, faculty, and community members.
- **Tangible educational outcomes:** The strategic investment in infrastructure and educational programs has substantially enhanced student outcomes, institutional growth, and overall educational quality.
- **Areas for improvement:** Attention is required in streamlining administrative processes, maintenance, and sustainable management of developed infrastructure to ensure long-term operational efficiency and sustainability.

Limitations of the assessment

- **Time constraints:** The entire assignment was executed within a tight timeline; thus, comprehensive field validation or prolonged qualitative engagement was limited.
- **Stakeholder coverage:** The study could not include direct interviews with students and faculty due to scheduling and access constraints. Hence, stakeholder voice representation is not fully inclusive.
- **Reliance on secondary data:** A significant portion of the report is based on data and documentation provided by MU and MEI without independent audit or verification. No forensic or financial audit was conducted by me.
- **Non-financial metrics estimation:** Tangible impact (e.g., improved student access) was assessed, but longitudinal tracking of educational quality or alumni performance is outside the scope.



DETAILED REPORT

1.1 Background

Brief Overview of Tech Mahindra & Its CSR Policy:

Tech Mahindra Limited (TechM) is a global leader in the Information, Communications, and Technology (ICT) sector, known for delivering innovative and impactful solutions to a diverse set of international clients, including Fortune 500 companies. Recognizing its role as a responsible corporate citizen, Tech Mahindra places strong emphasis on Corporate Social Responsibility (CSR), anchored by its guiding vision of "Empowerment through Education." This CSR framework demonstrates the company's commitment to ethical practices, sustainable growth, quality educational initiatives, and fostering a culture of empathy and social responsibility within its workforce and community.

Introduction to Mahindra University and MEI:

Mahindra Educational Institutions (MEI), established as a not-for-profit subsidiary of Tech Mahindra, reflects the organization's deep-rooted belief in the transformative power of education. MEI's flagship initiative, Mahindra University (MU), was founded with the mission of becoming a distinguished educational institution, providing quality education, pioneering research, innovation, and technological advancement. MU is committed to nurturing talent through interdisciplinary programs, innovative teaching methodologies, and practical skill development, significantly supported by Tech Mahindra's strategic CSR contributions.



Historical and Current Context:

MEI's journey began in 2014 with the establishment of Mahindra École Centrale (MEC), in collaboration with the prestigious École Centrale Paris. Over the years, MEC evolved and expanded into what is now Mahindra University in 2020, marking a significant milestone in its journey. This evolution represents a strategic growth focused on developing comprehensive educational programs spanning multiple disciplines, including Engineering, Management, Law, Education, and Design & Hospitality management. Presently, Mahindra University continues its trajectory of rapid growth, enhancing its infrastructure, expanding research capabilities, and broadening its academic offerings, bolstered by ongoing support from Tech Mahindra's dedicated CSR initiatives.

1.2 Purpose of the Report

Objectives and Scope:

The primary objective of this report is to assess the impact of CSR contributions provided by Tech Mahindra Limited to Mahindra Educational Institutions during the fiscal year 2024-25. Specifically, this report aims to:

- Evaluate the tangible and intangible outcomes resulting from Tech Mahindra's CSR contributions.
- Verify the effective utilization of CSR funds by MEI.
- Assess the alignment of outcomes with the stated CSR objectives of Tech Mahindra.
- Provide strategic recommendations for potential improvements or course corrections in ongoing CSR initiatives.



Assessment period:

The scope of this report exclusively covers the financial year 2024-25, delivering a thorough evaluation of Tech Mahindra's CSR investments and their tangible and intangible impacts during this period.

2: Corporate Social Responsibility (CSR) Framework at Tech Mahindra

2.1 Legal background (Companies Act, 2013)

CSR framework in India is guided by Section 135 of the Companies Act, 2013. Law mandates specific obligations for companies based on their financial performance. Under these provisions:

- Companies are required to spend at least 2% of their average net profits from the preceding three financial years on eligible CSR activities.
- Companies must establish a dedicated CSR Committee composed of a minimum of three directors, one of whom must be an independent director.
- The CSR Committee is responsible for formulating and recommending CSR policies, as well as monitoring and reporting on their implementation.
- Companies must include a comprehensive disclosure of their CSR policy, initiatives, and expenditure in their annual reports.

Mandatory CSR Spending requirements:

Criteria	Threshold
Net worth	₹ 500 crore or more
Annual turnover	₹ 1000 crore or more



Net profit

₹ 5 crore or more

2.2 Tech Mahindra's CSR Philosophy

Tech Mahindra's CSR philosophy is succinctly captured by the vision: "Empowerment through Education." The core belief underlying this philosophy is that quality education and skill development are powerful tools for driving sustainable and inclusive social change.

Objectives of Tech Mahindra's CSR Initiatives:

- To conduct business ethically and responsibly, emphasizing transparent governance practices.
- To actively support and align with the nation's sustainable development goals and broader social initiatives.
- To maintain excellence in the delivery of educational and social sector programs by establishing scalable and replicable models.
- To cultivate a compassionate corporate culture, motivating employees to engage proactively in community service.

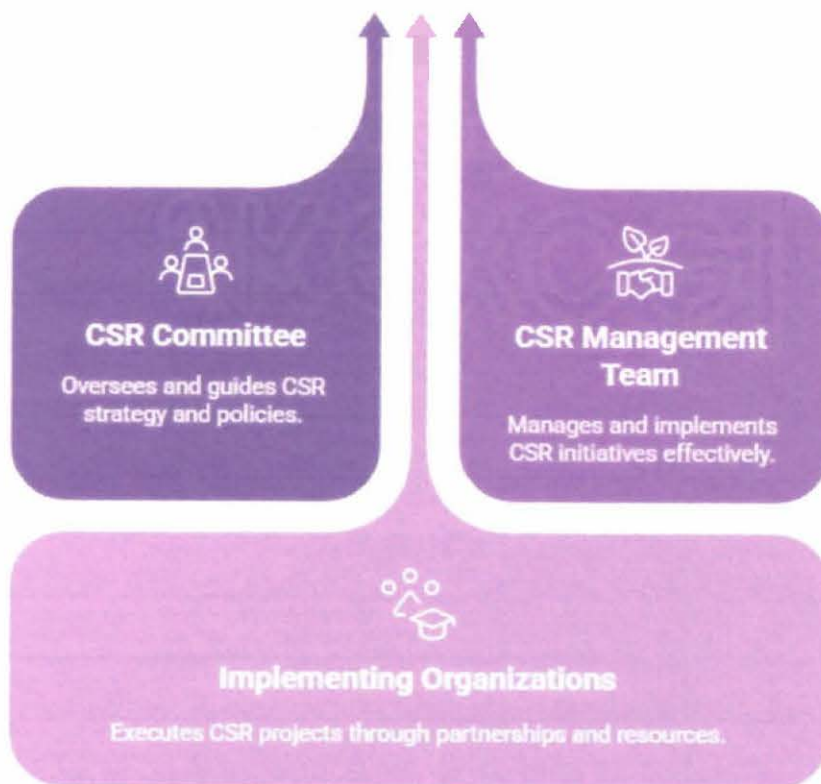
Primary focus areas:

- **School education:** Enhancing access and quality in school education through capacity building and educational support programs.
- **Employability and skill development:** Providing market-oriented training and employment opportunities to youth, particularly those from underserved communities.
- **Technical education:** Establishing institutions of higher learning and fostering research and development collaborations to advance technical education standards.

- **Empowerment of marginalized communities:** Focusing initiatives on the upliftment and empowerment of women, differently abled individuals, and economically disadvantaged groups.

2.3 Governance & Management

CSR Governance Structure at Tech Mahindra:



Governing Body of Mahindra University:

Name	Role	Designation
Mr. Anand Mahindra	Chairman	Chancellor (Chairman)
Dr. Yogita Rana (IAS)	Member	Principal Secretary (Higher Education) Govt. of Telangana
Ms. Shobana Kamineni	Member	Promoter Director, Apollo Hospitals Enterprise Limited & Executive Chairperson, Apollo Health Co Ltd and Apollo Pharmacies Ltd
Mr. Ranjan Pant	Member	CEO Advisor, Ex Bain
Ms. Krishna Kumari Palle	Member	Vice President, Delivery and Operations Head - EMEA
Dr. Yajulu Medury	Member	Vice Chancellor, Mahindra University
Col Rajive Chauhan	Non-Member Secretary	Registrar, Mahindra University
Mr. CP Gurnani	Special Invitee	Former CEO & MD, Tech Mahindra Ltd.



Board of Management of Mahindra University:

Name	Position
Dr. Yajulu Medury	Chairman
Mr. CP Gurnani	Member
Dr. Anish Shah	Member
Mr. Mohit Joshi	Member
Ms. Anuja Mahindra Sharma	Member
Dr. Mukti Khaire	Member
Mr. Zoooben Bhiwandiwalla	Member
Mr. Ulhas Yargop	Member
Mr. MM Murugappan	Member
Mr. Alok Kshirsagar	Member
Mr. Harshvendra Soin	Member
Mr. Shivanand Raja	Special Invitee
Mr. Milind Kulkarni	Special Invitee
Dr. Bishnu Pal	Member
Dr. Arya Kumar Bhattacharya	Member
Dr. Anadi Pande	Member
Dr. Rajinder Chauhan	Member
Dr. Srinivasa Rao Srungarapu	Member
Dr. Shashi Nanjundaiah	Member
Dr. Battula Kalyana Chakravarthy	Member
Dr. Thirugnanasambantham K	Member



3: Methodology & Approach

3.1 Methodology overview

To thoroughly assess the impact of Tech Mahindra's CSR initiatives, a mixed-method approach combining both quantitative and qualitative techniques was employed. This method enabled a comprehensive evaluation by providing both statistical data and in-depth insights.

Assessment method:

- **Quantitative analysis:** Review of expenditure data, infrastructure development details, student admissions, and placements.
- **Qualitative analysis:** Stakeholder interviews, focus groups, site visits, and in-depth discussions.

Steps involved:

1. Identification and collection of primary and secondary data.
2. Conducting structured interviews and focus group discussions with key stakeholders.
3. Site visits to observe and verify infrastructure developments.
4. Quantitative data analysis to measure tangible outcomes such as educational infrastructure and placements.
5. Qualitative analysis to understand intangible impacts, such as perceptions and experiences of stakeholders.
6. Consolidation and triangulation of data to ensure accuracy and comprehensiveness.
7. Development of insights and actionable recommendations.

3.2 Sources of data

The study drew from diverse and credible sources of information to ensure robust and reliable findings.

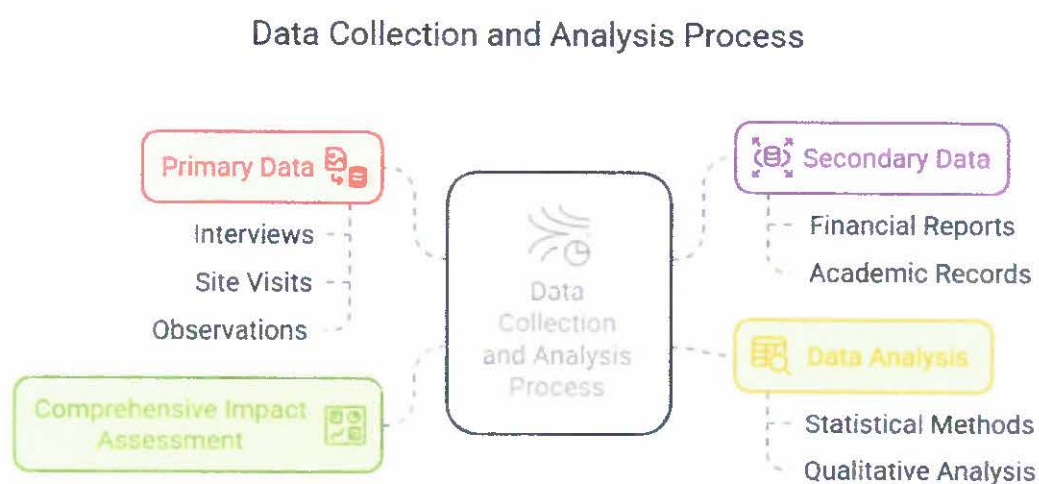
Primary data sources:

- Interviews with university administration (Vice Chancellor, Registrar, CFO).
- Focus groups and discussions with faculty and staff.
- Direct observation and documentation during site visits.

Secondary data sources:

- Financial statements and expenditure reports provided by Mahindra Educational Institutions.
- Academic records, student admission, and placement data.
- Patents and research documentation.
- Existing impact assessment reports and organizational documents.

Data collection process:



3.3 Limitations of the Study

- **Time constraints:** Limited timeframe available for extensive fieldwork and stakeholder engagement.
- **Data availability:** Dependence on timely and accurate data provision by various departments.
- **Scope of interviews:** Interviews primarily conducted with administrative staff; limited direct engagement with students.
- **Depth of qualitative data:** Potential limitations in capturing nuanced qualitative insights due to time restrictions.

4: Detailed Impact Assessment

4.1 Qualitative impact

Methodology: The qualitative assessment involved detailed interviews, focus group discussions, and on-site observations. Emphasis was placed on understanding stakeholder experiences and perceptions related to CSR-funded initiatives.

Stakeholder interactions: In-depth interactions were held with university leadership, administrative staff, and faculty members to capture nuanced insights.

Interview excerpt:

“The new facilities provided by Tech Mahindra’s CSR funds have significantly improved the learning environment. Students and faculty alike express greater satisfaction and motivation.” – Registrar, Mahindra University.



Student profiles: During the 2024-25 academic year, MU saw diverse student enrollment, with increased participation from underrepresented regions, reflecting broader geographic outreach and inclusion.

Program outcomes:

- Enhanced engineering knowledge and analytical skills.
- Improved problem-solving and critical-thinking capabilities.
- Increased awareness of societal, ethical, and environmental issues.
- Greater proficiency in teamwork and interdisciplinary collaborations.
- Stronger communication and leadership skills.

UG Students admitted into University:

During the academic year 2024-25, Mahindra University (MU) successfully admitted a total of 1,962 students across undergraduate, postgraduate, and doctoral programs.

The consistent rise in enrollment reflects the university's growing appeal, marked by increased participation from diverse regions across India and a notable uptick in female student admissions. This positive trend underscores the expanding reach and influence of the Mahindra University brand. Importantly, the growing visibility of MU also reinforces the broader outreach of Tech Mahindra's brand, aligning seamlessly with the company's CSR vision of promoting inclusive and quality education.

The detailed breakdown of MU admissions is as follows:

Details	FY 2024-25
Total Admissions	1,962
Total Application Received	17,981
NRI Applications	194
Admissions North& East	97



NRI Admissions	94
Total number of Offers Made	5,141
Total Offers Accepted	2,371
Total Cancellations	409
Admitted Students	57.14 : 42.86
Gender Diversity: (Boys : Girls)	

Student enrolment: Academic year 2024

Programme	Type	Count
B.Tech	UG	1014
M.Tech	PG	118
Ph. D (various departments)	PG	111
School of Management	UG	397
School of Law	UG	178
School of Law	PG	40
IMSoE	PG	21
Media	UG	48
Design	UG	35
Total		1,962

During the current year, the School of Design Innovation was launched offering an undergraduate program in design.



Programme-wise details: PG & Ph. D

Programme	Type	Count
M.Tech	PG	118
3 Years Hons	PG	40
MA Education	PG	21
Ph.D Engineering	Ph.D	68
Ph.D Business Management	Ph.D	12
Ph.D Law	Ph.D	15
Ph.D Education	Ph.D	8
Ph.D Design	Ph.D	4
Ph.D Media	Ph.D	4
Total		290

Programme-wise details: UG

Programme	Count
Computer Science and Engineering	239
Artificial Intelligence	188
Electronics and Computer Engineering	78
Electronics and Communication Engineering	91
Computational Biology	21
Civil Engineering	37
Bio-Technology	47
Mechatronics	33
Computation Mathematics	65



Mechanical Engineering	32
VLSI Design and Technology	28
Aerospace Engineering	29
Nano Technology	12
Electrical Engineering and E-Mobility	2
5 Year Integrated Bio-Technology	9
5 Year Integrated Computer Science and Engineering	103
BBA Digital Technologies	278
BBA Computational Business Analytics	64
BBA Applied Economics & Finance	55
BA,LLB Hons	59
BBA,LLB Hons	119
Bachelors program in Design	35
Bachelors program in Journalism and Mass Communication	18
B.Tech Computation and Media	30
Total	1,672

List of Patents filed/published/granted during 2024-25

1. Sreedhar Madichetty, "Immersion Cooling System for Lithium-Ion Battery Packs for Electric Vehicles (EV)" (Application No.: 202441090928)
2. Sreedhar Madichetty, "Artificial Intelligence (AI) Driven Cybersecurity System for Secure EV Charging (Application No.: 202441090809)
3. Sreedhar Madichetty, "A System and Method for Wind Turbine Emulator Analysis and Optimization", 202441099180, 15/12/2024, Published



4. Sreedhar Madichetty, "A Sensorless Module For Voltage And Current Estimation Of Inverters Using Kalman Filter-Based Observers", 202441099179, 15/12/2024, Published
5. Sreedhar Madichetty, "An Islanding Detection Method Using Magnetic Characteristics Of The B-H Curve In The Lcl Filter Of A Grid-Tied Inverter", 14/12/2024, Published
6. Sreedhar Madichetty, "A System and Method for Threat Analysis with Countermeasures In Instance Of An Attack On Biometric Car Door Unlock System", 202441098518, 12/12/2024, Published
7. Sreedhar Madichetty, "Enhanced Smart Insulin Management System With Predictive Glucose Monitoring And Emergency Response Module", 202441098495, 12/12/2024, Published
8. Sreedhar Madichetty, "A Double End Encryption Module For Ocpp Protocol Of Electric Vehicle Charging", 202441098404, 12/12/2024, Published
9. Sreedhar Madichetty, "A Wireless Electric Vehicle Charging Protocol", 202441098148, 12/12/2024, Published
10. Sreedhar Madichetty, "An Automated Electric Vehicle Charging System with Adaptive Movement Mechanism", 202441098068, 12/12/2024, Published
11. Sreedhar Madichetty, "A Multi-Layer Multi-Tap Compact Sized Planar Transformer for Variable Output Voltage Applications", 202441098065, 11/12/2024, Published
12. Sreedhar Madichetty, "A Neuromorphic Controller for Power Electronic Converters", 202441097992, 11/12/2024, Published
13. Sreedhar Madichetty, "A Cybersecurity System and Mitigation of Replay Attacks in Power Converters Using Machine Learning-Integrated Nonce Mechanism", 202441097969, 11/12/2024, Published



14. Sreedhar Madichetty, "A Method of Secure EV Data Transmission to Cloud with Firmware Update Using Bootloader with Double End Decryption, 202441097677, 11/12/2024, Published
15. Sreedhar Madichetty, "IoT-controlled autonomous miniature vehicle with wireless communication and remote navigation for agriculture automation and remote surveillance", 202441097667, 10/12/2024, Published
16. Sreedhar Madichetty, "An Intelligent Control System for Monitoring the Maintenance of The Center Pivot Irrigation System", 202441097325, 10/12/2024, Published
17. Sreedhar Madichetty, "Adaptive Ev Charging System with Predictive Load Balancing and Grid Stability Features, 202441096862, 7/12/2024, Published
18. Sreedhar Madichetty, "Enhanced Traffic Recognition System for Computer Vision in Autonomous Electric Vehicles in Inclement Weather Conditions", 202441088567, 15/11/2024, Published
19. Sreedhar Madichetty, "A method of fabrication of an autonomous electric trike through sensor integration", 202441042839, 3/6/2024, Published
20. Ravi K. Bompelly, "Aircraft Engine Fuel Manifold with Positive Displacement Flow Modules for Reduced Pressure Oscillations", Indian Patent Filed on 27/05/2024; Application Number: 202441041126; Publication Date: 07/06/2024
21. Bharghava Rajaram, "Weed Destroying System and a Method Thereof", Indian Patent Application Number: 202441050757; Published
22. Pranav Reddy Saddi, Sai Harsha Somavarapu, Kondaiah Pulla and Visalakshi Talakokula, "Bolt Loosening Detection System Using Press-Fit Piezoelectric Sensor", Indian Patent Filed on 18/09/2024; Application Number: 202441070699; Publication Date: 01/11/2024



23. J. Lakshmi Charan, et.al, "AI Powered Innovative and Exponential Learning in Legal Education", Indian Patent Filed on 04/07/2024; Application Number: 202441051413; Publication Date: 12/07/2024
24. Gomathi Anandhanatarajan and Priya Pathmanathan. "A Method for Synthesis and Properties of Cerium Hydroxide and its Composites Thereof". India Provisional Patent application Number: 202441036742, Date: April 2024.
25. Suprabha S. Dixit, Sayali Shrishail Harke, and Chitra Gurnani, "Metal sulfides-based device for on-site detection of heavy metal ions in water and method therefor", India Provisional Patent application 202441030989, Date: April 2024
26. Sreedhar Madichetty, Pathan Meeravali Khan and Banda Mohan Krishna, "An Artificial Intelligence-Integrated Online Intrusion Detection System in Connected and Autonomous Vehicles", Indian Patent Filed on 28/04/2024; Application Number: 202441033688; Publication Date: 03/05/2024
27. Rahul Dass, Bharghava Rajaram, Akruti Rao Kandikonda, Gannarapu Likith and Prabhath Reddy Banda "Automated Short News Video Generation", Indian Patent Filed on :05/08/2024; Application No:202441058874; Publication Date: 09/08/2024
28. Subbarao Boddu and Abee Akorede Bello, " Cognitive Control Bci-Ai Wheelchair and Assistive Platform With Cyber-Physical Defense", Indian Patent Application Number: 202441077620
29. Arya Kumar Bhattacharya, " Dense Media Cyclone for Coal Beneficiation with Higher Separation Efficiency and Lower Misplacements", India Patent Filed
30. P. Jabaseelan, R. Ganguly, S. Mandal, Shyam S. Rao, Prathap Kumar, Arya Kumar Bhattacharya and Prafulla Kalapatapu, " Method and Tape Casting Apparatus for determining Control Parameters Minimizing Defects in a Tape Casting Process", India Patent Filed



31. Sudhamsu Mouli, Veeraiah T, M.P. Singh, Mahesh Chowdary Kongara.
“Optimizing UAV Energy Exchange Via Wireless Power Transfer.”, Indian Patent Filed on :15/04/2024; Application No:202441030347; Publication Date: 10/05/2024
32. Arya Kumar Bhattacharya, “Process-Drift-Insulated Adaptive Critic System for Automated Adaptation of Artificial Neural Networks Controlling Real Time Industrial Processes”, Indian Patent Filed ; Application Number: 202441090257
33. Neeraj Choudhary, Nilotpal Chakraborty and Angshuman Jana, “Flexible Load Simulator (FLOAS) for Next Generation Energy Systems”, Indian Patent Filed on 27/05/2024; Application Number: 202441040988; Publication Date: 31/05/2024
34. Shrawan Kumar, Saba Parveen, Hira Singh Gariya, Souradyuti Ghosh, Mrityika Sengupta, “Functional Nucleic Acid Assembly and Uses Thereof”, Indian Patent Filed on 27/11/2023; Application Number: 202341080341; Publication Date: 05/04/2024
35. Kondaiah Pulla, Mahesh Kotagiri, “Mechanical Energy Amplifier”, Indian patent filed on 27/06/2023; Application Number: 202341042869; Publication Date: 12/07/2024
36. Sreedhar Madichetty, Yellepeddi Venkata Sai Manoj, Shaik Abdul Kareem, Nandavaram Banda Shanthi Kumar and Sukumar Mishra, “A System for Detecting Faults Occurring on Panel Level in Solar Photovoltaic Arrays”, Indian patent filed on 17/02/2022; Application Number: 202241008481; Publication Date: 25/02/2022; Date of Grant: 30/05/2024; Patent No:540122
37. Arya K. Bhattacharya, “Digital Twins using Convolutional Neural Networks to emulate detailed conditions within represented physical processes”, Indian Patent Filed on 22/02/2021; Application number: 202141007423 (2021); Publication Date: 11/06/2021; Date of Grant: 22/08/2024 ; Patent No: 548300



Details of CSR funds utilized:

An amount of ₹ 74.93 Crores, was spent towards the following activities:

Project	Purpose
Hostel 2, Hostel 3, Hostel 4A, 4B	Refurbishment works for classrooms, BT labs, computer labs, Guesthouse, and ECSE academic Infrastructure like labs and office spaces etc.,
Hostel 2	30 double occupancy rooms, roads, cafeteria etc.,
Hostel 3	180 Rooms double Occupancy
Guest House 30	Executive Rooms, BT labs in IT 2 Ground floor, Computer labs in IT2 first floor) (Partial Expenditure), IQAC, Chemistry lab, ERP office, civil Engineering lab, Admin area refurbishment works etc.

Amount spent on Research & Development activities

An amount of ₹3.66 crores has been spent towards Research and development activities during the current academic year.

CSR Contributions – direct beneficiaries:

Mahindra University graduates continue to be actively recruited by leading corporates across India—a testament to their well-rounded capabilities, technical proficiency, and readiness for the professional world. This consistent hiring pattern highlights the university's success in nurturing talent that meets, and often exceeds, industry expectations.



More than just a reflection of academic performance, this is a strong endorsement of the university's dynamic and forward-thinking curriculum. Designed in close alignment with real-world business needs, the programs at MU blend academic rigour with practical application, ensuring students are equipped not only with knowledge but with the skills to innovate, lead, and adapt in a rapidly evolving marketplace.

Additionally, the growing number of pre-placement offers, industry internships, and student achievements in national and international forums signal the deepening trust that employers place in the Mahindra University talent pool. It reinforces the institution's role as a pipeline for next-generation professionals and thought leaders.

Details of placements for academic year 2024:

Program	Students
Computer Science Engineering	162
Artificial intelligence	122
Electronics & Computer Engineering	28
Computation & Mathematics	12
Mechanical Engineering	6
Mechatronics	5
Nanotechnology	1
Civil Engineering	2
Total	338

It is pertinent to note that the above 338 students were placed across 105 companies, which is 112% higher as compared to the previous year.



CSR contributions – indirect beneficiaries

Beyond the direct impact on students, the CSR contributions made by Tech Mahindra Limited during the financial year 2023–24 have created a ripple effect benefiting a broader ecosystem of stakeholders. These indirect beneficiaries include, but are not limited to, the following groups:

- **Faculty and Academic Staff:** Enhanced teaching infrastructure and academic resources have empowered educators to deliver more effective and engaging instruction. As of the latest academic cycle, Mahindra University employs a total of **552 staff members**, comprising **308 teaching faculty** and **244 non-teaching personnel**. This balanced workforce highlights the institution's commitment not only to delivering high-quality education through its academic staff but also to maintaining robust operational support systems through its dedicated non-teaching teams.
- **Administrative and Support Staff:** Investments in university operations and facilities have led to improved working conditions and increased efficiency.
- **Third-party Vendors and Service Providers:** Engagement in the construction, maintenance, and facility management projects supported by CSR funding has provided sustained employment and business opportunities to local vendors and contractors. As of the current reporting period, the university employs:
 - **209 housekeeping staff** responsible for maintaining hygiene and cleanliness across the campus,
 - **200 security personnel** ensuring a safe and secure environment,
 - **170 catering staff** managing food services for students, faculty, and guests,
 - **58 maintenance staff** attending to the upkeep and repair of infrastructure,
 - **49 gardening staff** contributing to the upkeep of green spaces and aesthetic landscaping,
 - **28 office assistants** supporting administrative and clerical tasks, and

- **11 pest control personnel** maintaining sanitary standards and preventing infestations.
- **Prospective Students and Families:** The elevated reputation of Mahindra University, supported by visible CSR-driven development, has influenced educational choices and aspirations in communities across the country.
- **Surrounding Communities:** Development of university infrastructure and services has contributed to local economic activity, skill development, and improved public infrastructure in the vicinity of the campus.

These indirect impacts illustrate the broader societal value generated by Tech Mahindra's commitment to inclusive and sustainable development through education-focused CSR interventions.

4.3 Intangible & indirect impacts

Indirect benefits:

- Improved institutional reputation and brand equity.
- Increased community awareness of sustainable development.
- Enhanced student and faculty morale.
- Strengthened alignment between industry expectations and academic curriculum.
- Promotion of a culture of innovation and research.

5: Key Findings and Recommendations

Key findings:

- **Significant infrastructure improvement:** Major upgrades in educational infrastructure have positively impacted student experience and institutional capability.
- **Enhanced student outcomes:** Increased student admissions and improved placement statistics reflect effective CSR interventions in education quality and employability.



- **Positive stakeholder perception:** High levels of satisfaction among stakeholders (students, faculty, administration) regarding Tech Mahindra's CSR initiatives.
- **Improved brand reputation:** The CSR initiatives significantly enhanced the brand equity and societal perception of Tech Mahindra and Mahindra University.
- **Alignment with CSR Objectives:** Overall outcomes effectively aligned with Tech Mahindra's stated CSR objectives, demonstrating effective implementation and governance.

Recommendations:

- Introduce a structured system to track the progress and impact of CSR projects, ensuring funds are used effectively.
- Organize regular feedback sessions to better understand the needs and experiences of students and faculty.
- Incorporate eco-friendly practices in all future infrastructure projects to support environmental goals.



APPENDIX

Glossary:

AI	- Artificial Intelligence
CA	- Chartered Accountant
CFO	- Chief Financial Officer
COE	- Centres of Excellence
CSE	- Computer Science
CSR	- Corporate Social Responsibility
EEE	- Electrical and Electronics, Engineering
ERP	- Enterprise Resource Planning
HR	- Human Resources
ICT	- Information, Communications and Technology
IMSoE	-Indira Mahindra School of Education
IT	- Information Technology
JEE	- Joint Entrance Examination
JNTUH	- Jawaharlal Nehru Technological University, Hyderabad
ME	- Mechanical Engineering
MEC	- Mahindra Ecole Centrale
MEI	- Mahindra Education Institutions
MU	- Mahindra University
NRI	- Non-resident Indian
PG	- Postgraduate
PPO	- Pre Placement Offer
R&D	- Research and Development
IMSoE	- School of Education
SOL	- School of Law
SOM	- School of Management
TechM	- Tech Mahindra Limited
TMF	- Tech Mahindra Foundation
TML	- Tech Mahindra Limited
UG	- Undergraduate
VC	- Vice-Chancellor



Images of the constructions/infrastructural development for which the CSR funds were used:

HOSTEL III



HOSTEL IV A



HOSTEL IV A



GUEST HOUSE



SCHOOL OF MEDIA

